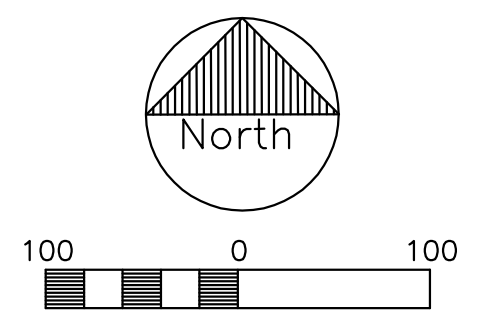
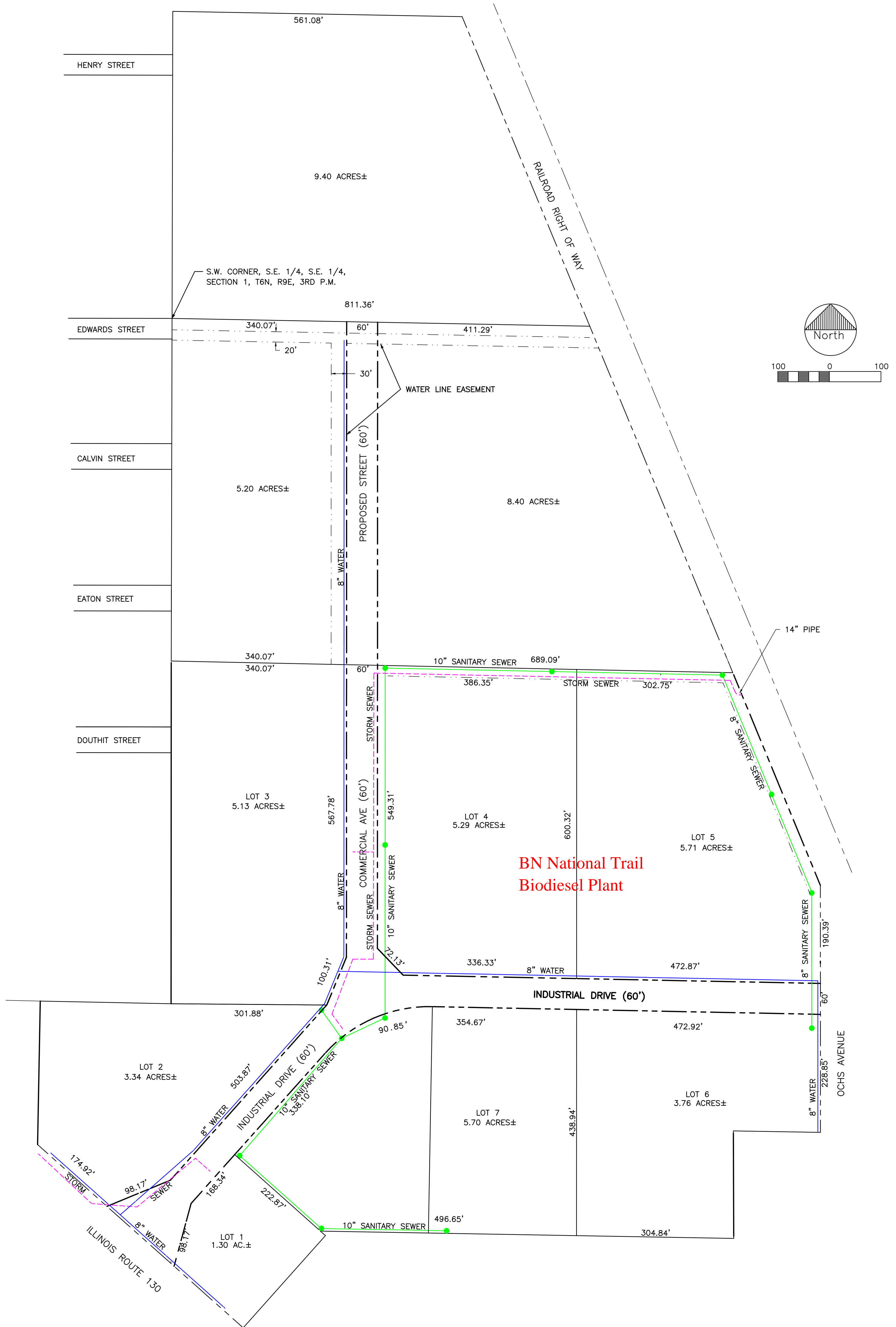


**SOUTHTOWN INDUSTRIAL PARK
ROUTE 130, NEWTON, ILLINOIS
PART OF S.E. 1/4, S.E. 1/4, SECTION 1 AND
PART OF N.E. 1/4, SECTION 12, ALL IN
T6N, R9E, 3RD P.M. JASPER COUNTY, ILLINOIS**



DATE: XX/XX/XX
SCALE: 1" = 100'
DRAWN BY: XXX
PROJECT: P-XXXX-X
SHEET: XX OF XX

CONNOR & CONNOR, INC.
CONSULTING ENGINEERS/LAND SURVEYORS

Phone: 618-544-8623 209 NORTH CROSS STREET Fax: 618-544-3012
ROBINSON, ILLINOIS 62454

PROFESSIONAL DESIGN FIRM #184-000832

Licensed Engineers Licensed Surveyors

CITY OF NEWTON
SOUTHTOWN INDUSTRIAL PARK
LOT LAYOUT AND UTILITIES

| REVISIONS | BY |
|-----------|----|
| | |
| | |
| | |