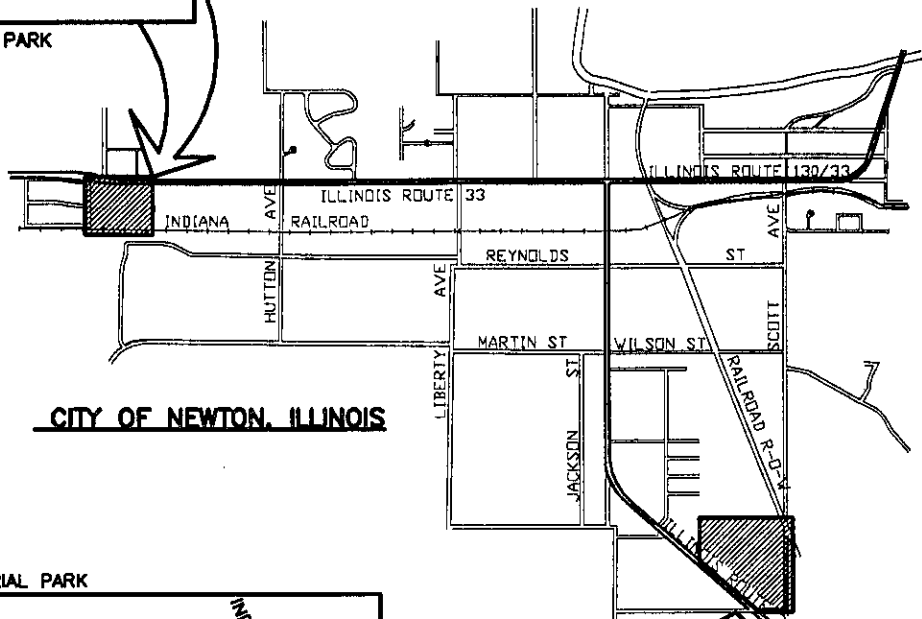
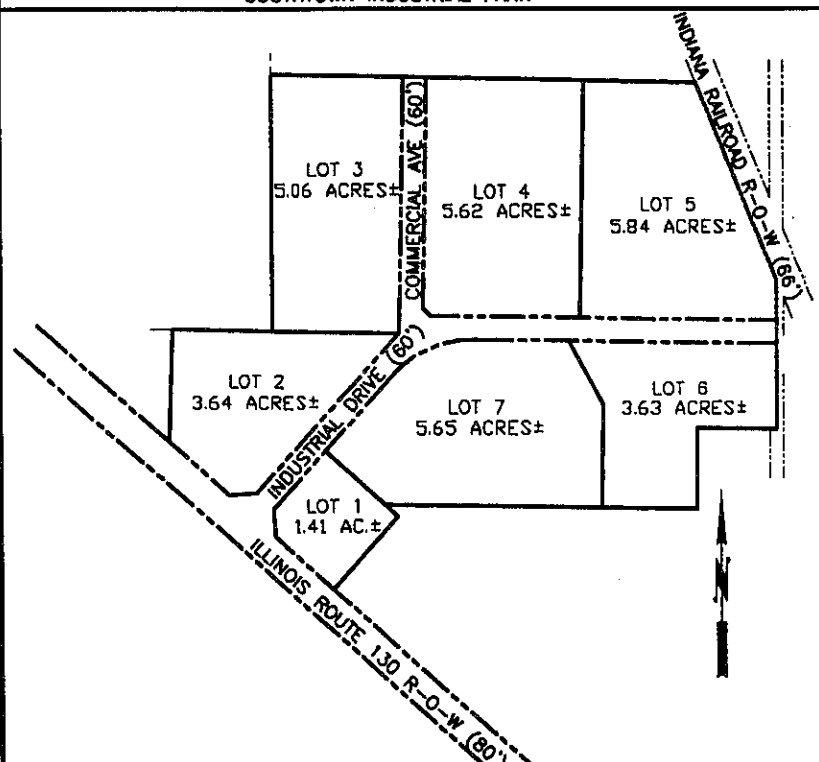


WEST END INDUSTRIAL PARK



CITY OF NEWTON, ILLINOIS

SOUTHTOWN INDUSTRIAL PARK



Licensed Engineers

CONNOR & CONNOR, Inc.
CONSULTING ENGINEERS

Phone
618-544-8623

209 North Cross Street
ROBINSON, ILLINOIS 62454

Fax
618-544-3012



Licensed Surveyors